

Easy Ordering

Part #	Description	Details
E-4642	FILLON Quick-Mix 220, MAIN KIT*	INCLUDES: 1 Set of Front and Rear Floor Sections 3 x Quart 1 Liter Shelf with 18-places 2 x Gallon 3 Liter/3.5 Liter Shelf with 12-places 1 x Header Board 6 x Magnetic Quart Platforms For Quick-Mix 220 Kit For Quick-Mix 220 Kit
E-4617 E-4658	FILLON Quick-Mix 3/4 HP Motor Module Nason ID Kit <i>*Must order motor module and ID kit separately.</i>	
E-4652	KIT Quick-Mix 150 Base Kit, SPECIAL NEEDS KIT*	INCLUDES: 1 Set of Front and Rear Floor Sections 1 x Gallon Shelf 1 x Header Board For Quick-Mix 150 Kit For Quick-Mix 150 Kit
E-4617 E-4658	FILLON Quick-Mix 3/4 HP Motor Module Nason ID Kit <i>*Must order motor module and ID kit separately.</i>	
ASSOCIATED ITEMS		
E-4618	FILLON Gallon 3 Liter/3.5 Liter Shelf with 12-places	Additional Shelf for Quick-Mix 220
E-4619	FILLON Quart 1 Liter Shelf with 18-places	Additional Shelf for Quick-Mix 220
E-4653	FILLON Gallon 3 Liter/3.5 Liter Shelf with 8-places	Additional Shelf for Quick-Mix 150
E-4654	FILLON Quart 1 Liter Shelf with 12-places	Additional Shelf for Quick-Mix 150
E-4643	FILLON QL35 Quart/Liter Lid	Quantity per Case/12 each
E-4644	FILLON QL35 Gallon/3.5/3.0-Liter Lid	Quantity per Case/6 each
E-4648	FILLON Magnetic Quart/Liter Platform	Packaged 6 per Box
130ST90	TB90 Professional Blending Table	Includes Alu/Zinc Surface and Drawer
E-4650	TB120 Deluxe Blending Table	Includes Stainless Steel Surface and Drawer
E-4651	Wall Storage Cabinet	3 Adjustable Shelves/Locking Provision

A Service Driven Policy for Customers

Our policy is to make every effort to take care of your needs with good communication and follow through. In today's competitive environment you need great service to back-up quality products...Fillon understands this and is ready to respond.

For technical support, mechanical replacement parts, or more information about our products call or email Fillon Technologies.

1-800-777-1583 or 401-431-1580

Monday- Friday, 8:00 - 4:30 PM EST

or sales.northamerica@fillontech.com

Please visit our website at www.fillon-technologies.com

Fillon
Technologies

FILLON TECHNOLOGIES NORTH AMERICA, Inc.
70 Commercial Way | East Providence | Rhode Island | 02914-1006

nason[®]
f i n i s h e s

3-NA335 (08/05)

DuPont™, Nason®, Teflon® and X-Pert™ are registered trademarks or trademarks of E.I. du Pont de Nemours and Company or its affiliates. © 2005 DuPont. All rights reserved.

www.PerformanceCoatings.DuPont.com



Paint Mixing Equipment

nason[®]
f i n i s h e s

A member of DuPont Performance Coatings

Value in a Hurry

Nason® is the easy choice for shops that do simple, cost limited paint repairs and overalls. It is widely available in the US and Canada, and delivers unequaled value compared to other economy and component manufacturers.

Nason is pleased to offer mixing equipment by **Fillon Technologies**, the leading manufacturer, to provide its customers with outstanding value, high-performance, and brilliant lasting finishes. Fillon machines employ trusted and patented **Quick-Link™** technology for **faster and easier** can handling, plus laboratory tested timed stirring to ensure that every toner is blended to perfection. Fillon equipment also meets the most stringent quality control standards to provide consistent **reliability** and **correctness** to the preparation of **Nason** paint brands.

We invite you to join the many satisfied Nason Automotive Finishes customers using Fillon equipment throughout the World.



Shown: Quick-Mix 150 Plus: 64.5"W x 20.5"D
Quick-Mix 220 Plus: 92"W x 20.5"D

Quick-Mix 220/150 Plus Features

Quick-Mix Plus machines feature a snap-together **modular** design for greater **flexibility**, easy assembly, and improved **durability**. Quick-Mix Plus machines can accommodate up to 6 mixing shelves in addition to the base assembly. Quick-Mix Plus makes for an unprecedented **quality** mixing experience.

Quick-Mix machine feature a UL/CSA (Class 1, Division 1, Group D) Approved Explosion-Proof 3/4 hp single-phase motor, 115V/60 Hz with intrinsically safe timer (15-minute cycle with +/-1 keys).

- Fast and effortless handling of paint cans - even while the machine is running!
- Reassurance that cans stay engaged with the driving mechanisms for reliability
- Pre-assembled components for faster assembly and without any tools
- Patented Quick-Link™ technology the most surefire and trusted in the World



Self-loading Drive Shafts



Lightweight base easier to install

QL35 Mixing Lids

For unrivaled pouring **accuracy** and **faster** dispensing of solvent based paints. Fillon earned its reputation for the best performing mixing lids – see why for yourself.

- Wide mouth for faster pouring; sliding lip cover for better accuracy
- Gliding mixing blade never damages the bottom of the can
- Smooth thumb lever action for greater comfort and more control
- For professionals that demand the very best performance



QL35 QT



QL35 GAL

X-Pert™ System Mixing Lids

Designed by Fillon to fit the X-Pert dispensing system for automated pouring. X-Pert lids include several **key enhancements** that make them **superior** for preventing leakage and reducing solvent evaporation. Ask your Nason Automotive Finishes Sales Representative to demonstrate the many advantages of the X-Pert Mixing System.

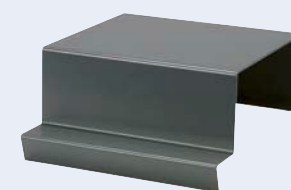
- Modified vent hole location and CAM lock seals to minimize leaking and solvent evaporation
- Teflon® slide valve allows easy thumb actuation and lid cleaning
- Can be used manually or with an X-Pert System
- Available in all sizes for both solvent and waterborne paints



X-Pert QT



X-Pert Gal



Quart Platform



TB90 Professional Blending Table

Robust table featuring an **Alu/Zinc** work surface with industry standard dimensions (36"W x 22"D x 32"H).

- Easy to assemble takes just a few minutes
- Utility drawer and lower storage shelf for paint supplies
- Adjustable leveling feet for greater stability
- Outstanding powder coat finish



TB120 Deluxe Blending Table

Custom designed table made exclusively for Nason Automotive Finishes featuring **extra** workspace (46"W x 22"D x 32"H) to accommodate **more** of today's mixing accessories.

- Brilliant brushed stainless steel work surface for easy cleaning
- Handy utility drawer and lower storage shelf for paint supplies
- Adjustable leveling feet for greater stability
- Ruggedly built to last for years of dependable service



Wall Cabinet

The **perfect** storage cabinet for storing small tools and equipment for the professional shop.

- Easy to configure with three adjustable shelves
- Superb epoxy powder coat finish
- Perfect size for most shops: 36"W x 9"D x 31"H
- Double doors with magnetic catches and locking provision